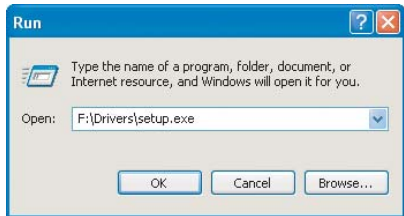
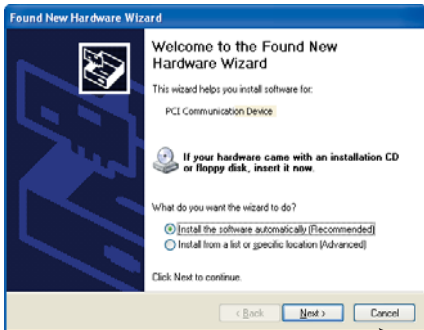


# Installation Guide

1. Power off your computer and plug-in the PCI modem
2. Power on your computer. Windows will start "Add New Hardware Wizard". Click on "Cancel" to exit the wizard

\* If you have Windows XP which didn't show up this wizard, please go **step 3** to recover latest driver directly.

3. Put the CD come with the package in CD-ROM drive.
4. Run **SETUP.EXE** in **\Drivers** folder on CD to install driver properly
5. Reboot your system to complete installation



- \* The modem may not work properly if you use driver comes with MS Windows
- \* This modem was designed for Windows 98 second edition, ME, 2000 and XP only